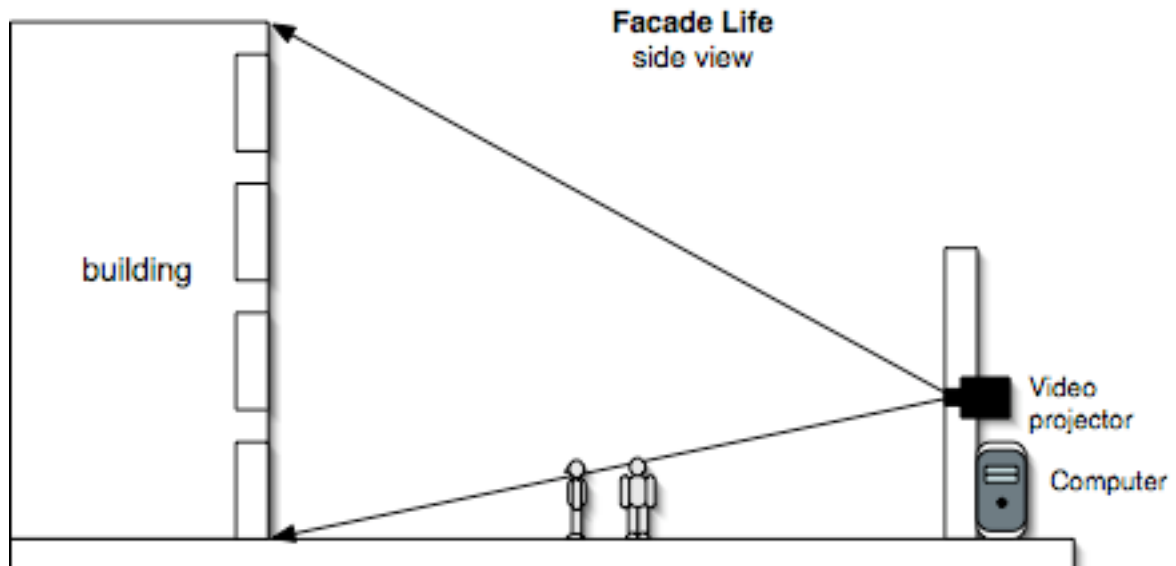


Façade Life

Antoine Schmitt

Tech Rider



Material :

- powerful computer, type Macintosh MacIntel duo 2.4 Ghz or PC (to be provided)
- videoprojector adapted to night projection on a large surface : high contrast (4000:1) and high power (10.000 lumens min) and wide angle lens (to be provided)
- specific software (provided by the artist)

Installation

- Façade selected by the artist
- installation on site by the artist : 1 day min